

AMILCAR SALMSON REGISTER SPARES

STOCK LIST




Parts available to Amilcar Salmson Register Members only

<u>Engine</u>	Model	Price (£s)	
E4	Valve Springs	Early CC	20 set
E5	Valve Springs	CC/CS/C4	30 set
E6	Valve Springs	Splash CGS (doubles)	30 set
E7	Valve Springs	CGS/CGSs (doubles)	50 set
E9	Sump	CGSs (the wide one)	135
E10	Gudgeon Pin		10 set
E11	Side water manifold (early type)		30
E11a	Side water manifold (late type)		30
E12	Solex Carb. main jet – 110, 105, 100, 95, 90, 85, 80, 70		10.50 each
E13	Solex Carb idle jet – 55, 50, 45, 40		10.50 each
E14	Oil pressure relief spring		7 each
E15	Inlet Manifold		22 each
E16	Cylinder Head Gasket – CC/C4/CV/CS		o/s
E17	Cylinder Head Gasket – CGS/CGSs		o/s
E18	Cylinder Head Gasket – M Type		85 each
E19	Set Timing Gears		o/s
E20	Cylinder Head Nuts, stainless, correct dome head, etc.		6 each
E21	Exhaust Manifold Gaskets		35.00 each
E22	Flywheel Ring Gear		149.00
E23	Throttle Spring		8.50
E24	Valve Set	CGS/CGSs	275.00
 <u>Transmission</u>			
T1	Half-shaft EN24T	CGS/CGSs	o/s
T2	Speedo drive casting u/m	All	25
T3	Speedo driven gear - 21 tooth		78
T4	Speedo driven gear – 30 tooth		55
T5	Speedo driving gear (suits 21 tooth)		55
T6	Clutch plates	CGS/CGSs 9 stud	o/s
T7	Clutch springs		4 each
T8	Strong clutch springs		4 each
T9	Fabric Coupling – 128mm PCD		133
T10	Fabric Coupling – 140mm PCD		138
 <u>Steering</u>			
ST1	Steering Column Support u/m		25
ST2	Steering wheel 4 spoke u/m	CGSs?G/M	20
ST3	Steering wheel 3 spoke	CC/CS/C4/CGS	o/s
 <u>Brakes</u>			
B1.	Pull off springs	CC/CS/CGS(r)	5 pair
B2.	Pull off springs	CGS/G/L/M/C6	10 pair
B3.	Pull off adjuster spring		5 pair
B4.	Cross shaft spring		o/s
B5.	Back Plate		60 pair
B6.	Brake adjuster screw	CC/CS/C4/CGS	22 pair
B7.	Brake adjuster screw	CGSs/G/E/M/C6	22 pair
B8.	Brake shoes - u/m	C4	45 pair
B12	Cotter Pins 10mm Stainless Steel		9

AMILCAR SALMSON REGISTER SPARES

STOCK LIST

Parts available to Amilcar Salmson Register Members only

	Model	Price (£s)	
<u>Coachwork</u>			
C1	Bonnet catch (sill)	All	o/s
C2	Bonnet Landing		o/s
C3	Bonnet catch stainless steel screws with brass nuts set of 4		5
C4	Spare wheel carrier u/m	All	25
			
C5	Step plate		35
			
C7	Raised head M7 Bolts to secure dash, floormats, etc.		3.50 each
C8	Raised M5 for choke, etc.		4 each
C9	Ducellier Switch plate front		15
C10	Ducellier Switch engraved insert (please indicate 'AMILCAR' or 'DUCELLIER') logo		28
			
C11	Dished washers for use with C.7 on floormats		3 each
C12	Ducellier switch levers - u/m casting (also see note below)		20 pair
<u>Suspension</u>			
S1.	S/A link late u/m		8
S2.	S/A link early m/c		10
S3.	S/A link early u/m		8
S4.	Rear spring pin (axle to spring)		40 pr.
<u>Dial Faces</u>			
D1	Jaeger Speedometer 70 & 80 mph		5
D2	Jaeger Tachometer 6000, 7000 & 8000 rpm		5
D3	Jaeger Clock 4 & 8 day		5

AMILCAR SALMSON REGISTER SPARES

STOCK LIST

Parts available to Amilcar Salmson Register Members only

	Model	Price (£s)
D4	Oil Pressure	o/s
D5	Huile Amilcar kilos	5
D6	Amps	o/s
D7	Nivex (24 Litre)	24

Others

O1	C Spanner – wheel locking ring All	o/s
----	------------------------------------	-----



O2	Start Handle support u/m	15
O3	Exhaust cut-out bracket	o/s
O4	Windscreen Nut u/m	o/s
O5	Ignition Advance/Retard lever and castings (3) set (now includes small lever at magneto end) (General arrangement drawing and installation photos available on request)	65



O6	Choke control dashboard casting	10
----	---------------------------------	----



O7	Throttle Shaft support castings (per pair)	25
----	--	----



O8	Accelerator pedal	25
O9	Floor mats (330x490) CS/CGS/CGSs	o/s
O10	Felt washers front & rear hubs & prop shaft	5 set
O11	Throttle lever (carb. end of throttle shaft)	20

AMILCAR SALMSON REGISTER SPARES

STOCK LIST

Parts available to Amilcar Salmson Register Members only

<u>Plates</u>		Model	Price (£s)
P1	Car	CC/CV/C4	30
			
P2	Car	CGS/CGSs	25
			
P3	Engine	CGSs from 1927-ish	o/s
			
P4	"AMILCAR" rad script		25
P5	"AMILCAR" woven badge		o/s
P6	"YACCO" for oil filler		20
			
P7	Coachwork Plate Duval		20
			
P8	Coachwork Amilcar		20
			

AMILCAR SALMSON REGISTER SPARES

STOCK LIST

Parts available to Amilcar Salmson Register Members only

		Model	Price (£s)
--	--	-------	------------

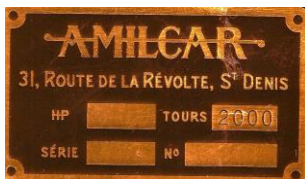
P9	Engine	M etc.	25
----	--------	--------	----



P10	Engine	Splash feed engines to circa. 1924	25
-----	--------	------------------------------------	----



P11	Engine	Five digit CGSs, late CS, CGS3 and G	25
-----	--------	--------------------------------------	----



P12	Engine	Late CGSS with capacity to support a 110mm stroke crank	35
-----	--------	---	----



P13	Car	1928 CGSs	30
-----	-----	-----------	----



Vintage Salmson Spares

SAL1	Inlet Manifold	22
SAL2	Water Manifold (cylinder head, suits 4pr and ohc)	45
SAL3	Starter motor bracket	60

AMILCAR SALMSON REGISTER SPARES

STOCK LIST

Parts available to Amilcar Salmson Register Members only

Misc.

- M1 Memory Stick of Technical Articles from the Amilcar Register Magazine 1981-2011 and Solex Carburettor, six original documents inc. tuning, parts lists 6hp early. 6cv late and CGS - £35
- M2 Louvre tool to form correct shape/length louvres in an Amilcar bonnet – free loan within UK only – requires a £300 returnable deposit.
- M3 CGSs Bonnet as pattern – free loan UK only – requires a £200 returnable deposit.
- M5 CGS/CGSs Front wing as pattern – free loan UK only – requires a £200 returnable deposit.

NOTE:

Regarding the Ducellier switch panel: Matthew Blake at Auto Electric Supplies in Tenbury Wells <http://www.autoelectricsupplies.co.uk> has two switches available that can be used in conjunction with these parts to make up a complete working panel, they are numbers 081002 and 081003 in his catalogue.

Register Spares Stockist

Martin Cawte

Abingdon High Street, Shirrell Heath, Southampton, Hampshire, SO32 2JN

Email: spares@amilcar.co.uk

Cheques (Please indicate what you have bought) payable to: Amilcar Salmson Ltd
Please post cheques to John Kearle, North Lodge, Nantgaredig, Carmarthen, SA32 7NR.

Paypal payments to: accounts@amilcar.co.uk (please add 5% for UK/Europe and 6% for RoW)

Bank Transfer: Barclays Bank Plc., 36 Dunraven Place, Bridgend, CF31 1YB

Sort Code: 20-12-25 Account No: 43784746

IBAN: GB63 BARC 2012 2543 7847 46

SWIFT: BARCGB22

(Revised and updated 13/10/21)